



56 De Beauvoir Crescent, London, N1

BUTLER  STAG





**Beautifully presented two double bedroom apartment overlooking Regent's Canal and the city Skyline with secure underground carparking.**



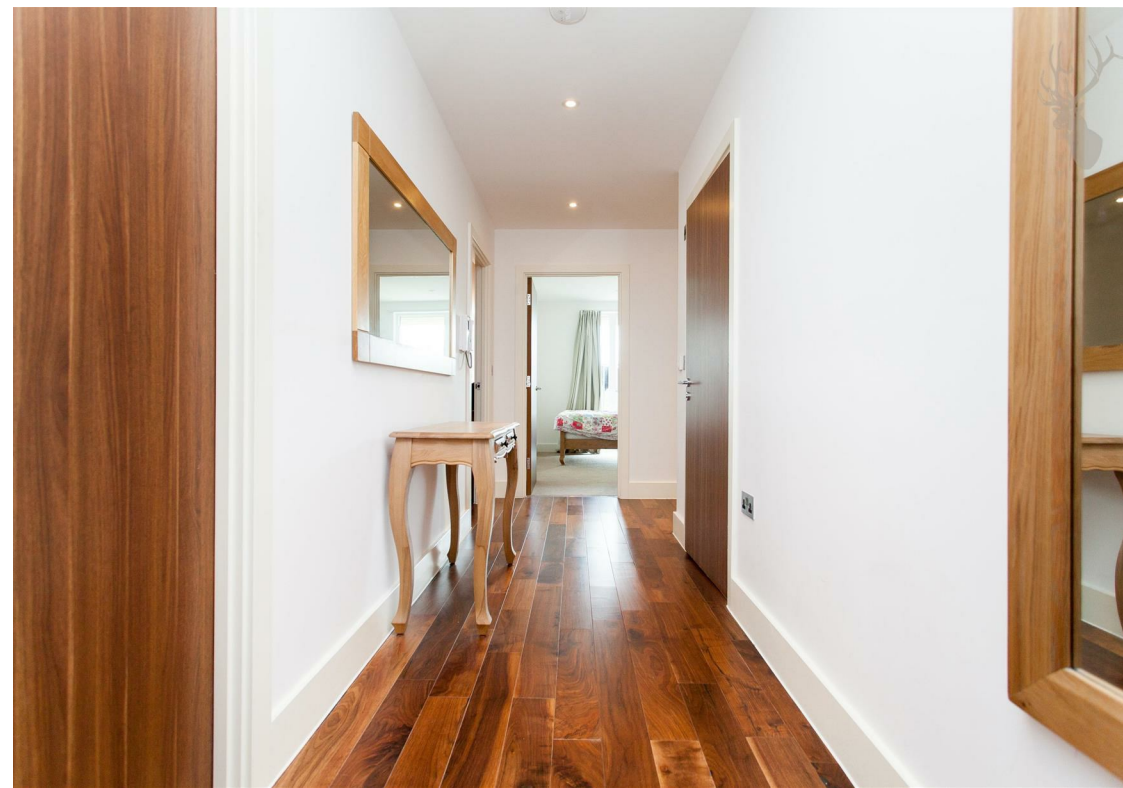
- Two Bedrooms
- South Facing Balcony With Canal Views
- Secure Underground Parking
- Two Bathrooms
- Great Transport Links
- Central To Local Hotspots
- Lift Access
- Available 5th December

Comprising a generous open plan kitchen and reception space, two double bedrooms, two bathrooms (one en-suite), and a storage space.



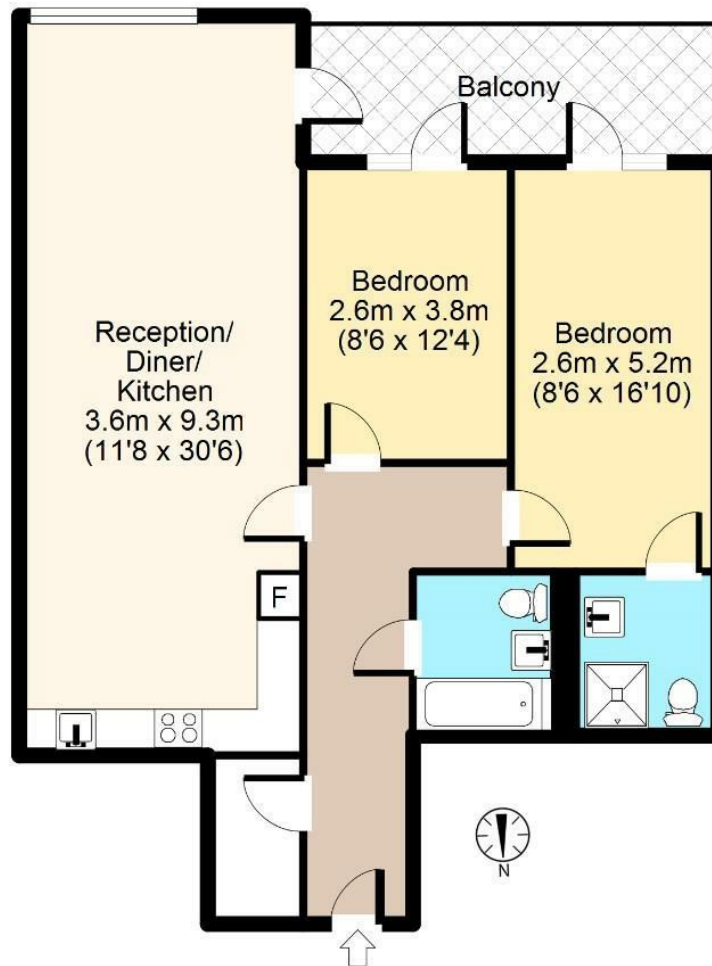
A large south facing balcony can be accessed via all rooms and boasts views across the Regent's Canal and over the City Skyline. Located in a lovely spot with a Venezuelan cafe/bar and seating by the canal on your door step. Haggerston Overground station is just moments away as are the shops, delicatessens and cafes of De Beauvoir. Central to vibrant Dalston, Hackney, Shoreditch and Angel Upper Street with a number of transport links direct to the City and West End.





# De Beauvoir, N1

3rd Floor



Total area: approx. 77 sq. metres (828 sq. feet)  
For illustration purposes only - not to scale  
[www.lpaplus.co.uk](http://www.lpaplus.co.uk)

IMPORTANT NOTICE - These particulars have been prepared in good faith and they are not intended to constitute part of an offer or contract. We have not performed a structural survey on this property and the services, appliances and specific fittings have not been tested. All photographs, measurements, floor plans and distances referred to are given as a guide and should not be relied upon.

## BUTLER & STAG

☎ 020 8102 1236

🏠 508 Roman Road, Bow, London, E3 5LU

✉ [bow@butlerandstag.com](mailto:bow@butlerandstag.com)

[www.butlerandstag.uk](http://www.butlerandstag.uk)